

---

# VxLAN Configuration Guide

## Table of Contents

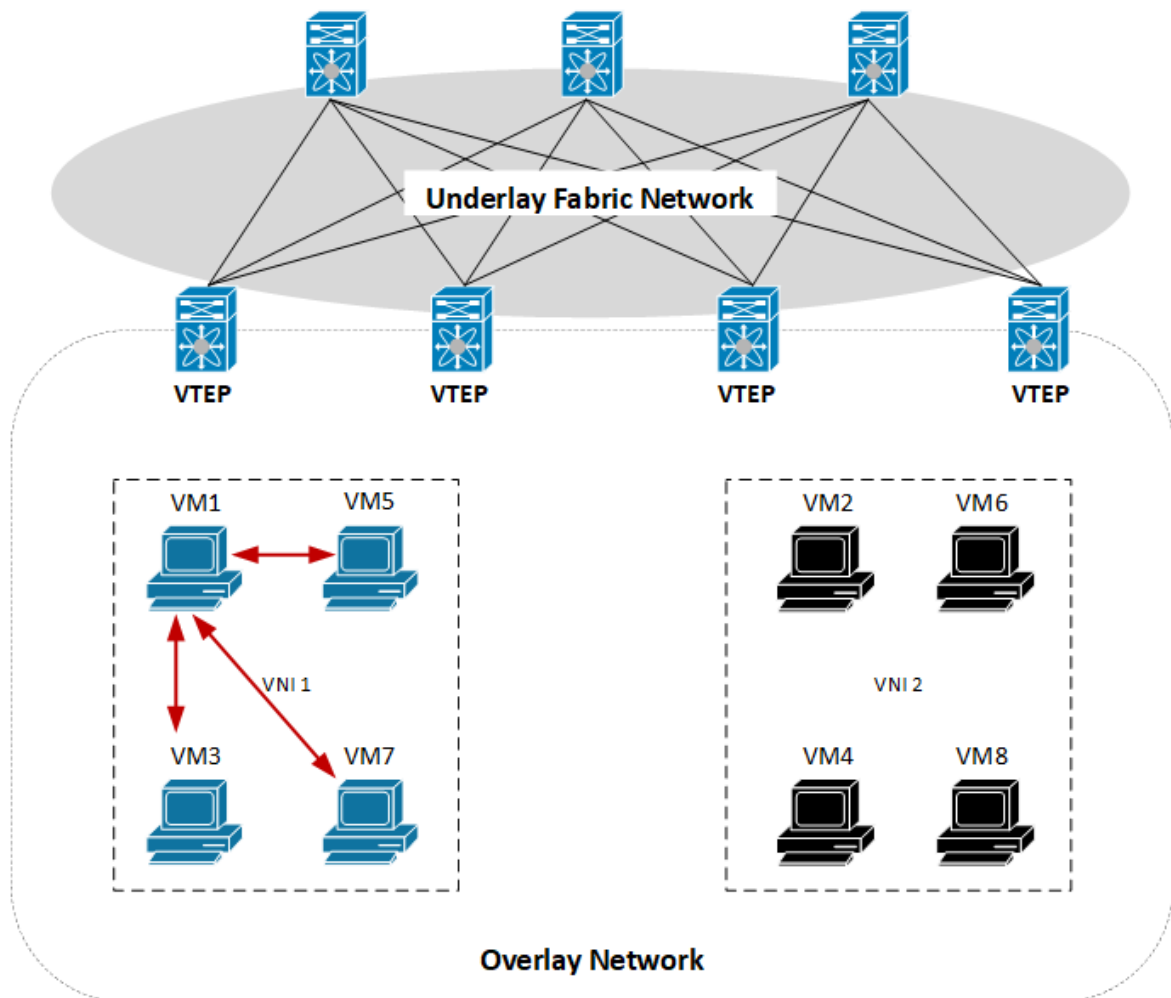
1. Use Case – VxLAN .....	2
1.1. Network Diagram .....	2
1.2. Topology .....	3
1.3. Configuration .....	3
2. Use Case – VxLAN RIOT .....	11
2.1. Network Diagram .....	11
2.2. Topology .....	12
2.3. Configuration .....	12
3. Use Case - VxLAN RIOT with an external router .....	24
3.1. Network Diagram .....	24
3.2. Topology .....	25
3.3. Configuration .....	25

# 1. Use Case – VxLAN

Service providers allow a tenant to have multiple Layer-2 networks. These Layer-2 networks are bridge domains in the overlay network. The VNIs which are associated with them are often referred to as Layer-2 (L2) VNIs.

- Configure the VxLAN tunnel for VNI
- Associate VNI to VLAN
- Associate VLAN to Access Port

## 1.1. Network Diagram



## 1.2. Topology

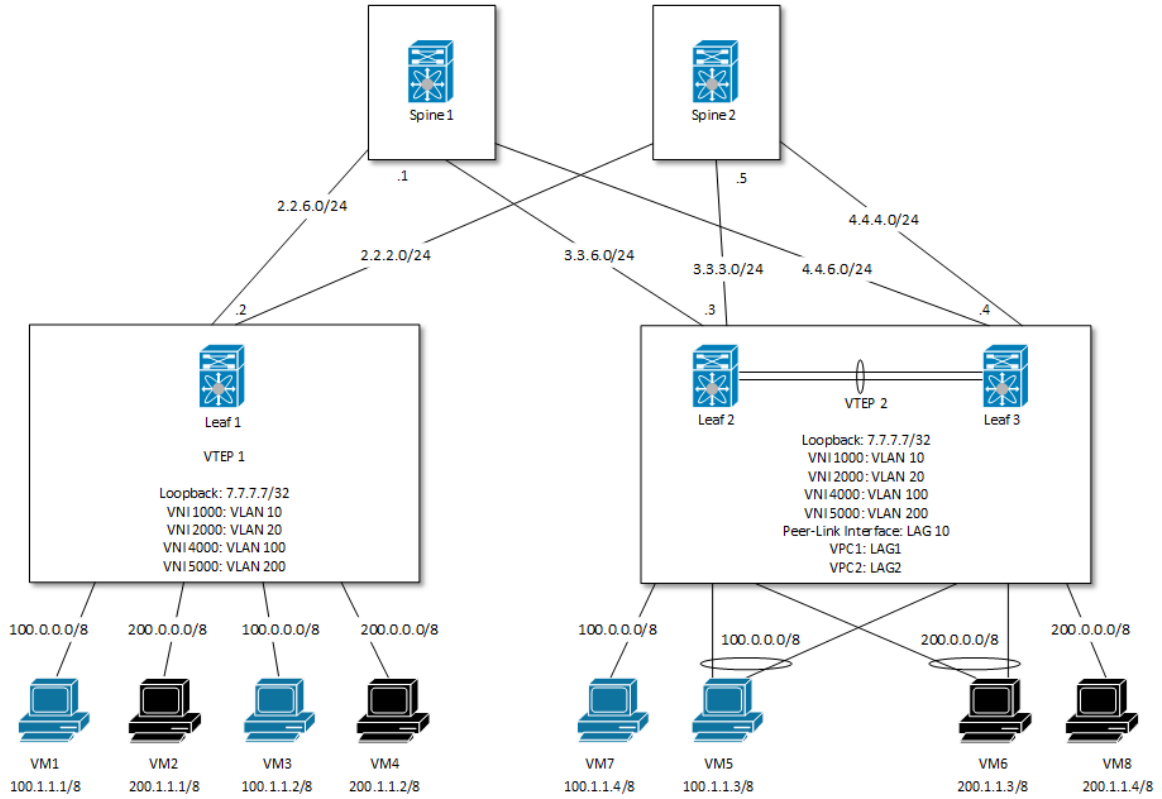


Table 1. Tenants List

VM	VNID	VLAN	IP
VM1	1000	10	100.1.1.1/8
VM3	1000	10	100.1.1.2/8
VM5	1000	10	100.1.1.3/8
VM7	1000	10	100.1.1.4/8
VM2	2000	20	200.1.1.1/8
VM4	2000	20	200.1.1.2/8
VM6	2000	20	200.1.1.3/8
VM8	2000	20	200.1.1.4/8

## 1.3. Configuration

### Leaf 1

```
!--- Create VLAN for VNI association
vlan database
vlan 10,20
```

```
exit
```

```
configure
ip routing
!--- Enable VxLAN mode
vxlan enable
!--- Configure source loopback interface for source VTEP address
vxlan source-interface loopback 0
!--- Associate VNI 1000 to VLAN 10
vxlan 1000 vlan 10
!--- Configure remote VTEP 8.8.8.8 for VNI 1000
vxlan 1000 vtep 8.8.8.8
!--- Associate VNI 2000 to VLAN 20
vxlan 2000 vlan 20
!--- Configure remote VTEP 8.8.8.8 for VNI 2000
vxlan 2000 vtep 8.8.8.8
!--- Create loopback for VxLAN source interface and source VTEP address
interface loopback 0
ip address 7.7.7.7 255.255.255.255
ip ospf area 0
exit
```

```
!--- Create the underlay routing interface to reach remote VTEP
interface 0/1
routing
ip address 2.2.2.2 255.255.255.0
ip ospf area 0
exit
```

```
!--- Create the underlay routing interface to reach remote VTEP
interface 0/2
routing
ip address 2.2.6.2 255.255.255.0
ip ospf area 0
exit
```

```
!--- Associate the VLAN 10 to configure the access port for VNI 1000
interface 0/3
vlan pvid 10
vlan participation exclude 1
vlan participation include 10
exit
```

```
!--- Associate the VLAN 20 to configure the access port for VNI 2000
interface 0/4
vlan pvid 20
vlan participation exclude 1
vlan participation include 20
exit
```

```
!--- Associate the VLAN 10 to configure the access port for VNI 1000
interface 0/5
vlan pvid 10
```

```
vlan participation exclude 1
vlan participation include 10
exit
```

```
!--- Associate the VLAN 20 to configure the access port for VNI 2000
interface 0/6
vlan pvid 20
vlan participation exclude 1
vlan participation include 20
exit
```

```
router ospf
router-id 2.2.2.2
exit
exit
```

### Leaf 2

```
!--- Create VLAN for VNI association
vlan database
vlan 10,20
exit
```

```
configure
ip routing
!--- Enable VxLAN mode
vxlan enable
!--- Configure source loopback interface for source VTEP address
vxlan source-interface loopback 0
!--- Associate VNI 1000 to VLAN 10
vxlan 1000 vlan 10
!--- Configure remote VTEP 7.7.7.7 for VNI 1000
vxlan 1000 vtep 7.7.7.7
!--- Associate VNI 2000 to VLAN 20
vxlan 2000 vlan 20
!--- Configure remote VTEP 7.7.7.7 for VNI 2000
vxlan 2000 vtep 7.7.7.7
```

```
!--- Add port to the port-channel
interface 0/3
addport 3/1
exit
interface 0/4
addport 3/2
exit
interface 0/49
addport 3/10
exit
```

```
!--- Create loopback for VxLAN source interface and source VTEP address
interface loopback 0
ip address 8.8.8.3 255.255.255.255
ip address 8.8.8.8 255.255.255.255 secondary
```

```
ip ospf area 0
exit
```

```
!--- Create the underlay routing interface to reach remote VTEP
interface 0/1
routing
ip address 3.3.3.3 255.255.255.0
ip ospf area 0
exit
```

```
!--- Create the underlay routing interface to reach remote VTEP
interface 0/2
routing
ip address 3.3.6.3 255.255.255.0
ip ospf area 0
exit
```

```
!--- Associate the VLAN 10 to configure the access port for VNI 1000
interface 0/5
vlan pvid 10
vlan participation include 10
exit
```

```
!--- Associate the VLAN 10 to configure the access port for VNI 1000
interface lag 1
no port-channel static
switchport mode access
switchport access vlan 10
!--- Configure the port-channel to VPC 1
vpc 1
exit
```

```
!--- Associate the VLAN 20 to configure the access port for VNI 2000
interface lag 2
no port-channel static
switchport mode access
switchport access vlan 20
!--- Configure the port-channel to VPC 2
vpc 2
exit
```

```
interface lag 10
no port-channel static
switchport mode trunk
!--- Allow the VLAN on peer-link for the access port
switchport trunk allowed vlan 10,20
vlan acceptframe vlanonly
!--- Configure the port-channel as the VPC peer-link
vpc peer-link
exit
```

```
router ospf
router-id 3.3.3.3
```

```
exit
!--- Enable VPC
feature vpc
!--- Create the VPC domain
vpc domain 1
!--- Enable the peer keepalive
peer-keepalive enable
!--- Configure the peer keepalive connection
peer-keepalive destination 10.58.151.57 source 10.58.151.56
!--- Configure the system MAC address for VPC domain
system-mac 00:00:00:33:33:33
!--- Configure the peer detection interval and timeout
peer detection interval 600 timeout 2000
!--- Enable the peer detection
peer detection enable
exit
exit
```

### Leaf 3

```
!--- Create VLAN for VNI association
vlan database
vlan 10,20
exit
```

```
configure
ip routing
!--- Enable VxLAN mode
vxlan enable
!--- Configure source loopback interface for source VTEP address
vxlan source-interface loopback 0
!--- Associate VNI to VLAN
!--- Configure remote VTEP for VNI
vxlan 1000 vlan 10
vxlan 1000 vtep 7.7.7.7
vxlan 2000 vlan 20
vxlan 2000 vtep 7.7.7.7
```

```
!--- Add port to the port-channel
interface 0/3
addport 3/1
exit
interface 0/4
addport 3/2
exit
interface 0/49
addport 3/10
exit
```

```
!--- Create loopback for VxLAN source interface and source VTEP address
interface loopback 0
ip address 8.8.8.4 255.255.255.255
```

```
ip address 8.8.8.8 255.255.255.255 secondary
ip ospf area 0
exit
```

```
!--- Create the underlay routing interface to reach remote VTEP
interface 0/1
routing
ip address 4.4.4.4 255.255.255.0
ip ospf area 0
exit
```

```
!--- Create the underlay routing interface to reach remote VTEP
interface 0/2
routing
ip address 4.4.6.4 255.255.255.0
ip ospf area 0
exit
```

```
!--- Associate the VLAN 20 to configure the access port for VNI 2000
interface 0/5
vlan pvid 20
vlan participation include 20
exit
```

```
interface lag 1
no port-channel static
switchport mode access
!--- Associate the VLAN 10 to configure the access port for VNI 1000
switchport access vlan 10
!--- Configure the port-channel to VPC ID 1
vpc 1
exit
```

```
interface lag 2
no port-channel static
switchport mode access
!--- Associate the VLAN 20 to configure the access port for VNI 2000
switchport access vlan 20
!--- Configure the port-channel to VPC ID 2
vpc 2
exit
```

```
interface lag 10
no port-channel static
switchport mode trunk
!--- Allow the VLAN on peer-link for the access port
switchport trunk allowed vlan 10,20
vlan acceptframe vlanonly
!--- Configure the port-channel as the VPC peer-link
vpc peer-link
exit
```

```
router ospf
```



```
router-id 4.4.4.4
exit
!--- Enable VPC
feature vpc
!--- Creaet the VPC domain
vpc domain 1
!--- Enable the peer keepalive
peer-keepalive enable
!--- Configure the peer keepalive connection
peer-keepalive destination 10.58.151.56 source 10.58.151.57
!--- Configure the system MAC address for VPC domain
system-mac 00:00:00:33:33:33
!--- Configure the peer detection
peer detection interval 600 timeout 2000
!--- Enable the peer detection
peer detection enable
exit
exit
```

## Spine 1

```
!--- Configure the underlay network
configure
ip routing
```

```
interface 0/2
routing
ip address 2.2.6.5 255.255.255.0
ip ospf area 0
exit
```

```
interface 0/3
routing
ip address 3.3.6.5 255.255.255.0
ip ospf area 0
exit
```

```
interface 0/4
routing
ip address 4.4.6.5 255.255.255.0
ip ospf area 0
exit
```

```
router ospf
router-id 1.1.1.1
exit
exit
```

## Spine 2

```
!--- Configure the underlay network
configure
```

---

```
ip routing
```

```
interface 0/2  
routing  
ip address 2.2.2.5 255.255.255.0  
ip ospf area 0  
exit
```

```
interface 0/3  
routing  
ip address 3.3.3.5 255.255.255.0  
ip ospf area 0  
exit
```

```
interface 0/4  
routing  
ip address 4.4.4.5 255.255.255.0  
ip ospf area 0  
exit
```

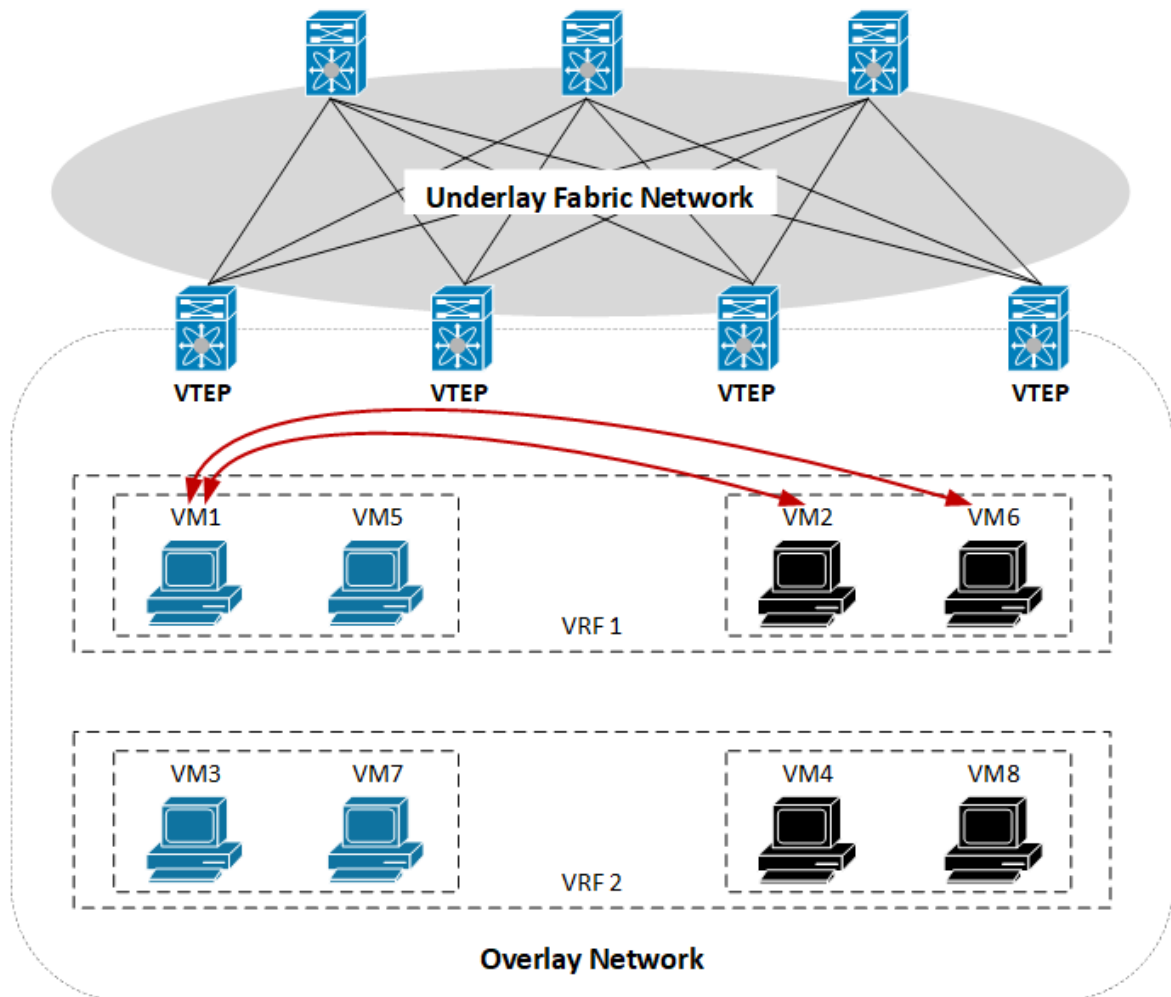
```
router ospf  
router-id 5.5.5.5  
exit  
exit
```

## 2. Use Case – VxLAN RIOT

Each tenant also needs a Layer-3 routing in itself VNIs for inter-VXLAN routing in its service domain.

- Configure the ethernet loopback LAG mode (ELBL)
- Configure the distributed anycast gateway
- Configure the VRF instance

### 2.1. Network Diagram



## 2.2. Topology

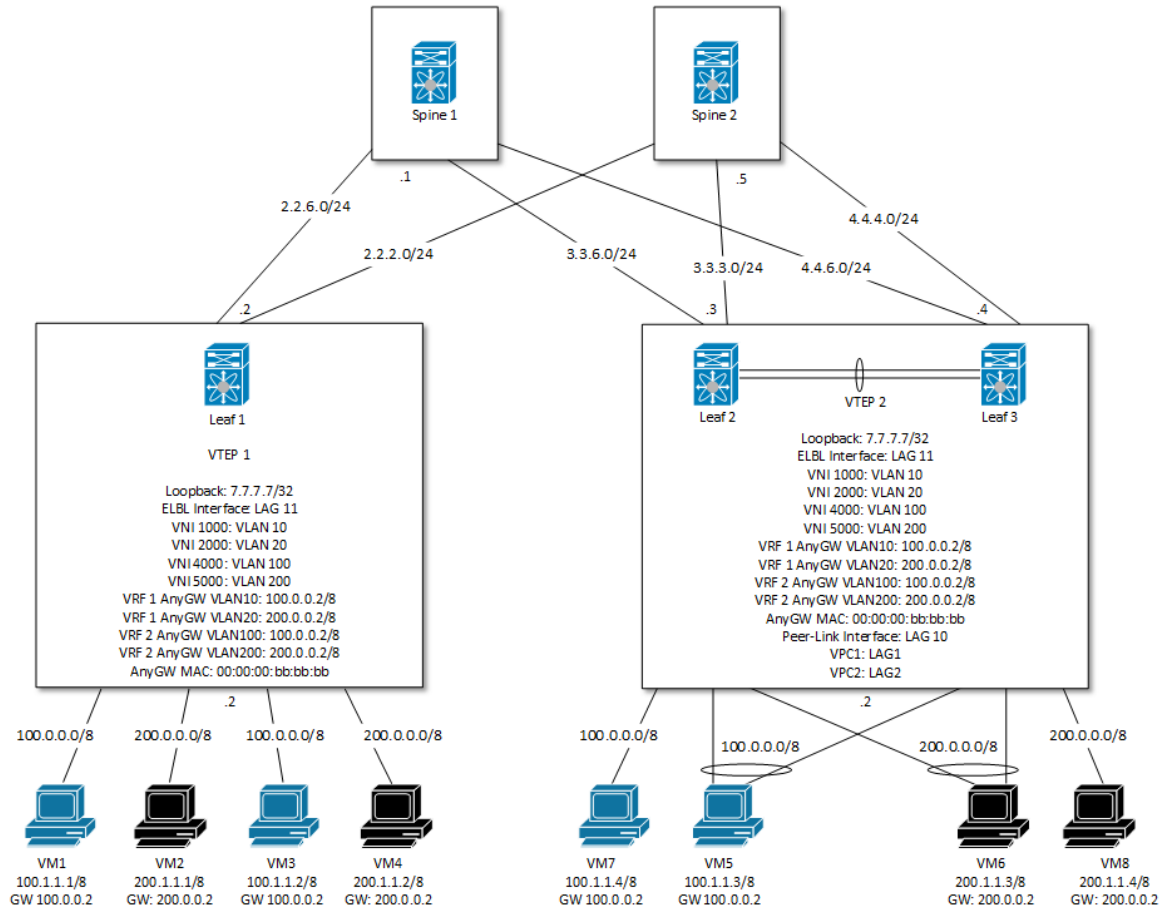


Table 2. Tenants List

VRF	VM	VNID	VLAN	IP	GateWay
VRF1	VM1	1000	10	100.1.1.1/8	100.0.0.2
VRF1	VM5	1000	10	100.1.1.3/8	100.0.0.2
VRF1	VM2	2000	20	200.1.1.1/8	200.0.0.2
VRF1	VM6	2000	20	200.1.1.3/8	200.0.0.2
VRF2	VM3	4000	100	100.1.1.2/8	100.0.0.2
VRF2	VM7	4000	100	100.1.1.4/8	100.0.0.2
VRF2	VM4	5000	200	200.1.1.2/8	200.0.0.2
VRF2	VM8	5000	200	200.1.1.4/8	200.0.0.2

## 2.3. Configuration

### Leaf 1

```
vlan database
```

```
!--- Create VLAN for VNI association
vlan 10,20,100,200
!--- Create VLAN routing as the gateway for RIOT host
vlan routing 10 1
vlan routing 20 2
vlan routing 200 4
vlan routing 100 5
exit
```

```
configure
ip routing
!--- Enable VxLAN mode
vxlan enable
!--- Configure source loopback interface for source VTEP address
vxlan source-interface loopback 0
!--- Associate VNI to VLAN
!--- Configure the remote VTEP for VNI
vxlan 1000 vlan 10
vxlan 1000 vtep 8.8.8.8
vxlan 2000 vlan 20
vxlan 2000 vtep 8.8.8.8
vxlan 4000 vlan 100
vxlan 4000 vtep 8.8.8.8
vxlan 5000 vlan 200
vxlan 5000 vtep 8.8.8.8
!--- Configure the MAC address of anycast-gateway across all leaf nodes
fabric forwarding mode anycast-gateway 00:00:00:BB:BB:BB
```

```
!--- Add port to the port-channel
interface 0/48
addport 3/11
exit
```

```
!--- Create VRF for multi-tenancy
ip vrf "aaa"
exit
ip vrf "bbb"
exit
```

```
!--- Create loopback for VxLAN source interface and source VTEP address
interface loopback 0
ip address 7.7.7.7 255.255.255.255
ip ospf area 0
exit
```

```
!--- Create the underlay routing interface to reach remote VTEP
interface 0/1
routing
ip address 2.2.2.2 255.255.255.0
ip ospf area 0
exit
```

```
!--- Create the underlay routing interface to reach remote VTEP
```

```
interface 0/2
routing
ip address 2.2.6.2 255.255.255.0
ip ospf area 0
exit
```

```
!--- Associate the VLAN 10 to configure the access port for VNI 1000
interface 0/3
vlan pvid 10
vlan participation exclude 1
vlan participation include 10
exit
```

```
!--- Associate the VLAN 20 to configure the access port for VNI 2000
interface 0/4
vlan pvid 20
vlan participation exclude 1
vlan participation include 20
exit
```

```
!--- Associate the VLAN 100 to configure the access port for VNI 4000
interface 0/5
vlan pvid 100
vlan participation include 100
exit
```

```
!--- Associate the VLAN 200 to configure the access port for VNI 5000
interface 0/6
vlan pvid 200
vlan participation include 200
exit
```

```
interface lag 11
!--- Enable the ethernet loopback LAG mode on the port-channel for RIOT
host routing
vxlan elbl mode
no spanning-tree port mode
vlan participation include 10,20,100,200
vlan tagging 10,20,100,200
exit
```

```
!--- Configure the vlan routing
interface vlan 10
routing
!--- Enable the anycast-gateway on vlan routing interface
fabric forwarding mode anycast-gateway
!--- Configure VRF instance for VRF aaa
ip vrf forwarding "aaa"
!--- Configure IP address
ip address 100.0.0.2 255.0.0.0
exit
```

```
interface vlan 20
```

```
routing
!--- Enable the anycast-gateway on vlan routing interface
fabric forwarding mode anycast-gateway
!--- Configure VRF instance for VRF aaa
ip vrf forwarding "aaa"
!--- Configure IP address
ip address 200.0.0.2 255.0.0.0
exit
```

```
interface vlan 200
routing
!--- Enable the anycast-gateway on vlan routing interface
fabric forwarding mode anycast-gateway
!--- Configure VRF instance for VRF bbb
ip vrf forwarding "bbb"
!--- Configure IP address
ip address 200.0.0.2 255.0.0.0
exit
```

```
interface vlan 100
routing
!--- Enable the anycast-gateway on vlan routing interface
fabric forwarding mode anycast-gateway
!--- Configure VRF instance for VRF bbb
ip vrf forwarding "bbb"
!--- Configure IP address
ip address 100.0.0.2 255.0.0.0
exit
```

```
router ospf
router-id 2.2.2.2
exit
!--- Enable the ARP dynamic renew mode for RIOT host
arp dynamicrenew
exit
```

## Leaf 2

```
vlan database
!--- Create VLAN for VNI association
vlan 10,20,100,200
!--- Create VLAN routing as the gateway for RIOT host
vlan routing 10 1
vlan routing 20 2
vlan routing 200 4
vlan routing 100 5
exit
```

```
configure
ip routing
!--- Enable VxLAN mode
vxlan enable
```

```
!--- Configure source loopback interface for source VTEP address
vxlan source-interface loopback 0
!--- Associate VNI to VLAN
!--- Configure the remote VTEP for VNI
vxlan 1000 vlan 10
vxlan 1000 vtep 7.7.7.7
vxlan 2000 vlan 20
vxlan 2000 vtep 7.7.7.7
vxlan 4000 vlan 100
vxlan 4000 vtep 7.7.7.7
vxlan 5000 vlan 200
vxlan 5000 vtep 7.7.7.7
!--- Configure the MAC address of anycast-gateway across all leaf nodes
fabric forwarding mode anycast-gateway 00:00:00:BB:BB:BB
```

```
!--- Add port to the port-channel
interface 0/3
addport 3/1
exit
interface 0/4
addport 3/2
exit
interface 0/49
addport 3/10
exit
interface 0/48
addport 3/11
exit
```

```
!--- Create VRF for multi-tenancy
ip vrf "aaa"
exit
ip vrf "bbb"
exit
```

```
!--- Create loopback for VxLAN source interface and source VTEP address
interface loopback 0
ip address 8.8.8.3 255.255.255.255
ip address 8.8.8.8 255.255.255.255 secondary
ip ospf area 0
exit
```

```
!--- Create the underlay routing interface to reach remote VTEP
interface 0/1
routing
ip address 3.3.3.3 255.255.255.0
ip ospf area 0
exit
```

```
!--- Create the underlay routing interface to reach remote VTEP
interface 0/2
routing
ip address 3.3.6.3 255.255.255.0
```



```
ip ospf area 0
exit
```

```
!--- Associate the VLAN 100 to configure the access port for VNI 4000
interface 0/5
vlan pvid 100
vlan participation include 100
exit
```

```
interface lag 1
no port-channel static
switchport mode access
!--- Associate the VLAN 10 to configure the access port for VNI 1000
switchport access vlan 10
!--- Configure the port-channel to VPC ID 1
vpc 1
exit
```

```
interface lag 2
no port-channel static
switchport mode access
!--- Associate the VLAN 20 to configure the access port for VNI 2000
switchport access vlan 20
!--- Configure the port-channel to VPC ID 2
vpc 2
exit
```

```
interface lag 10
no port-channel static
switchport mode trunk
!--- Allow the VLAN on peer-link for the access port
switchport trunk allowed vlan 10,20,100,200
vlan acceptframe vlanonly
!--- Configure the port-channel as the VPC peer-link
vpc peer-link
exit
```

```
interface lag 11
!--- Enable the ethernet loopback LAG mode on the port-channel for RIOT
host routing
vxlan elbl mode
no spanning-tree port mode
vlan participation include 10,20,100,200
vlan tagging 10,20,100,200
exit
```

```
interface vlan 10
routing
!--- Enable the anycast-gateway on vlan routing interface
fabric forwarding mode anycast-gateway
!--- Configure VRF instance for VRF aaa
ip vrf forwarding "aaa"
ip address 100.0.0.2 255.0.0.0
```

```
exit
```

```
interface vlan 20
routing
!--- Enable the anycast-gateway on vlan routing interface
fabric forwarding mode anycast-gateway
!--- Configure VRF instance for VRF aaa
ip vrf forwarding "aaa"
ip address 200.0.0.2 255.0.0.0
exit
```

```
interface vlan 200
routing
!--- Enable the anycast-gateway on vlan routing interface
fabric forwarding mode anycast-gateway
!--- Configure VRF instance for VRF bbb
ip vrf forwarding "bbb"
ip address 200.0.0.2 255.0.0.0
exit
```

```
interface vlan 100
routing
!--- Enable the anycast-gateway on vlan routing interface
fabric forwarding mode anycast-gateway
!--- Configure VRF instance for VRF bbb
ip vrf forwarding "bbb"
ip address 100.0.0.2 255.0.0.0
exit
```

```
router ospf
router-id 3.3.3.3
exit
!--- Enable the ARP dynamic renew mode for RIOT host
arp dynamicrenew
!--- Enable VPC
feature vpc
vpc domain 1
role priority 1
peer-keepalive enable
peer-keepalive destination 10.58.151.57 source 10.58.151.56
system-mac 00:00:00:33:33:33
peer detection interval 600 timeout 2000
peer detection enable
exit
exit
```

### Leaf 3

```
vlan database
!--- Create VLAN for VNI association
vlan 10,20,100,200
!--- Create VLAN routing as the gateway for RIOT host
```

```
vlan routing 10 1
vlan routing 20 2
vlan routing 200 4
vlan routing 100 5
exit
```

```
configure
ip routing
!--- Enable VxLAN mode
vxlan enable
!--- Configure source loopback interface for source VTEP address
vxlan source-interface loopback 0
!--- Associate VNI to VLAN
!--- Configure remote VTEP for VNI
vxlan 1000 vlan 10
vxlan 1000 vtep 7.7.7.7
vxlan 2000 vlan 20
vxlan 2000 vtep 7.7.7.7
vxlan 4000 vlan 100
vxlan 4000 vtep 7.7.7.7
vxlan 5000 vlan 200
vxlan 5000 vtep 7.7.7.7
!--- Configure the MAC address of anycast-gateway across all leaf nodes
fabric forwarding mode anycast-gateway 00:00:00:BB:BB:BB
```

```
!--- Add port to the port-channel
interface 0/3
addport 3/1
exit
interface 0/4
addport 3/2
exit
interface 0/49
addport 3/10
exit
interface 0/48
addport 3/11
exit
```

```
!--- Create VRF for multi-tenancy
ip vrf "aaa"
exit
ip vrf "bbb"
exit
```

```
!--- Create loopback for VxLAN source interface and source VTEP address
interface loopback 0
ip address 8.8.8.4 255.255.255.255
ip address 8.8.8.8 255.255.255.255 secondary
ip ospf area 0
exit
```

```
!--- Create the underlay routing interface to reach remote VTEP
```

```
interface 0/1
routing
ip address 4.4.4.4 255.255.255.0
ip ospf area 0
exit
```

```
!--- Create the underlay routing interface to reach remote VTEP
interface 0/2
routing
ip address 4.4.6.4 255.255.255.0
ip ospf area 0
exit
```

```
!--- Associate the VLAN 200 to configure the access port for VNI 5000
interface 0/5
vlan pvid 200
vlan participation include 200
exit
```

```
interface lag 1
no port-channel static
switchport mode access
!--- Associate the VLAN 10 to configure the access port for VNI 1000
switchport access vlan 10
!--- Configure the port-channel to VPC ID 1
vpc 1
exit
```

```
interface lag 2
no port-channel static
switchport mode access
!--- Associate the VLAN 20 to configure the access port for VNI 2000
switchport access vlan 20
!--- Configure the port-channel to VPC ID 2
vpc 2
exit
```

```
interface lag 10
no port-channel static
switchport mode trunk
!--- Allow the VLAN on peer-link for the access port
switchport trunk allowed vlan 10,20,100,200
vlan acceptframe vlanonly
!--- Configure the port-channel as the VPC peer-link
vpc peer-link
exit
```

```
interface lag 11
!--- Enable the ethernet loopback LAG mode on the port-channel for RIOT
host routing
vxlan elbl mode
no spanning-tree port mode
vlan participation include 10,20,100,200
```

```
vlan tagging 10,20,100,200
exit
```

```
interface vlan 10
routing
!--- Enable the anycast-gateway on vlan routing interface
fabric forwarding mode anycast-gateway
!--- Configure VRF instance for VRF aaa
ip vrf forwarding "aaa"
ip address 100.0.0.2 255.0.0.0
exit
```

```
interface vlan 20
routing
!--- Enable the anycast-gateway on vlan routing interface
fabric forwarding mode anycast-gateway
!--- Configure VRF instance for VRF aaa
ip vrf forwarding "aaa"
ip address 200.0.0.2 255.0.0.0
exit
```

```
interface vlan 200
routing
!--- Enable the anycast-gateway on vlan routing interface
fabric forwarding mode anycast-gateway
!--- Configure VRF instance for VRF bbb
ip vrf forwarding "bbb"
ip address 200.0.0.2 255.0.0.0
exit
```

```
interface vlan 100
routing
!--- Enable the anycast-gateway on vlan routing interface
fabric forwarding mode anycast-gateway
!--- Configure VRF instance for VRF bbb
ip vrf forwarding "bbb"
ip address 100.0.0.2 255.0.0.0
exit
```

```
router ospf
router-id 4.4.4.4
exit
!--- Enable the ARP dynamic renew mode for RIOT host
arp dynamicrenew
!--- Enable VPC
feature vpc
vpc domain 1
role priority 2
peer-keepalive enable
peer-keepalive destination 10.58.151.56 source 10.58.151.57
system-mac 00:00:00:33:33:33
peer detection interval 600 timeout 2000
peer detection enable
```

```
exit
exit
```

## Spine 1

```
!--- Configure the underlay network
configure
ip routing
```

```
interface 0/2
routing
ip address 2.2.6.5 255.255.255.0
ip ospf area 0
exit
```

```
interface 0/3
routing
ip address 3.3.6.5 255.255.255.0
ip ospf area 0
exit
```

```
interface 0/4
routing
ip address 4.4.6.5 255.255.255.0
ip ospf area 0
exit
```

```
router ospf
router-id 1.1.1.1
exit
exit
```

## Spine 2

```
!--- Configure the underlay network
configure
ip routing
```

```
interface 0/2
routing
ip address 2.2.2.5 255.255.255.0
ip ospf area 0
exit
```

```
interface 0/3
routing
ip address 3.3.3.5 255.255.255.0
ip ospf area 0
exit
```

```
interface 0/4
routing
ip address 4.4.4.5 255.255.255.0
```

```
ip ospf area 0  
exit
```

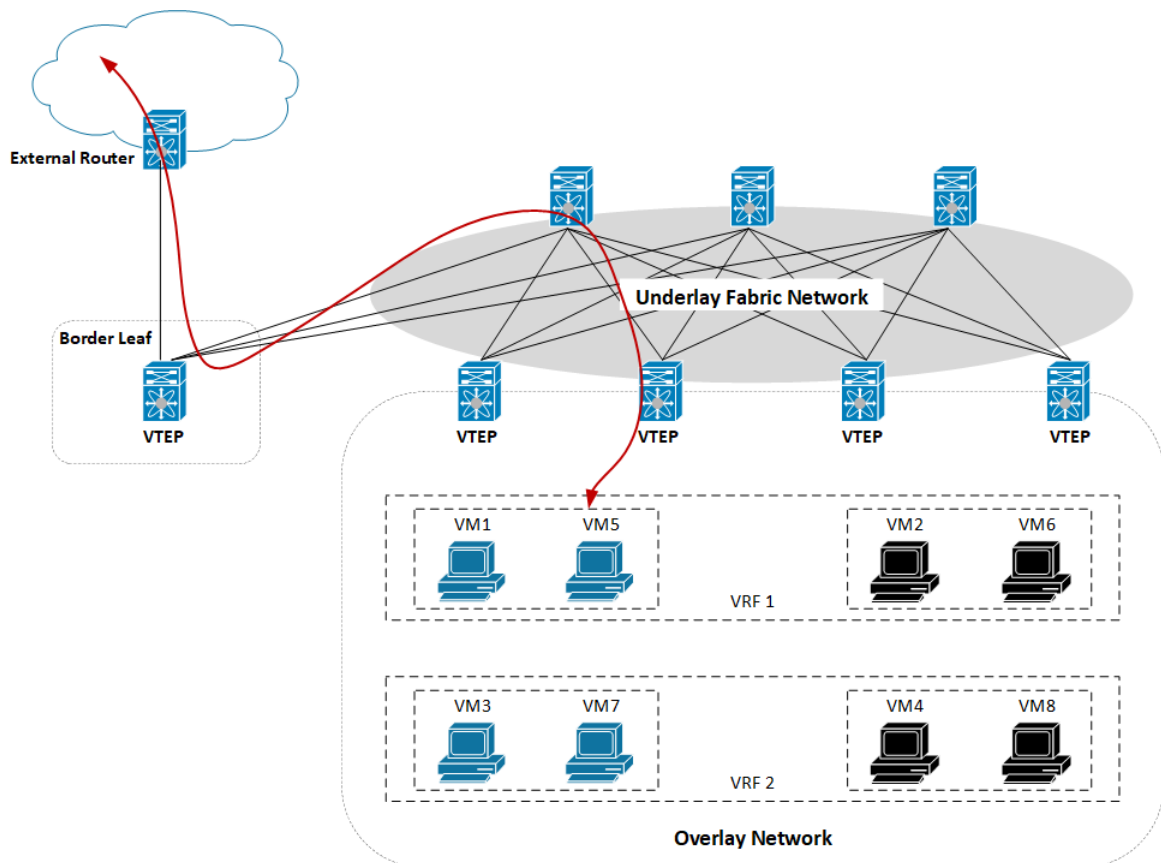
```
router ospf  
router-id 5.5.5.5  
exit  
exit
```

## 3. Use Case - VxLAN RIOT with an external router

The data center is not isolated from the rest of the network. When a VXLAN fabric is deployed in the data center, it needs to maintain connectivity with these networks that are external to the VXLAN fabric. With the standard spine-and-leaf fabric architecture, external connectivity can be achieved by using border leaf nodes to connect to the outside routing devices.

- Configure the network connectivity to the external router on border leaf
- Configure to import the route into VxLAN fabric network on border leaf
- Configure the VNI for external routing

### 3.1. Network Diagram





### 3.2. Topology

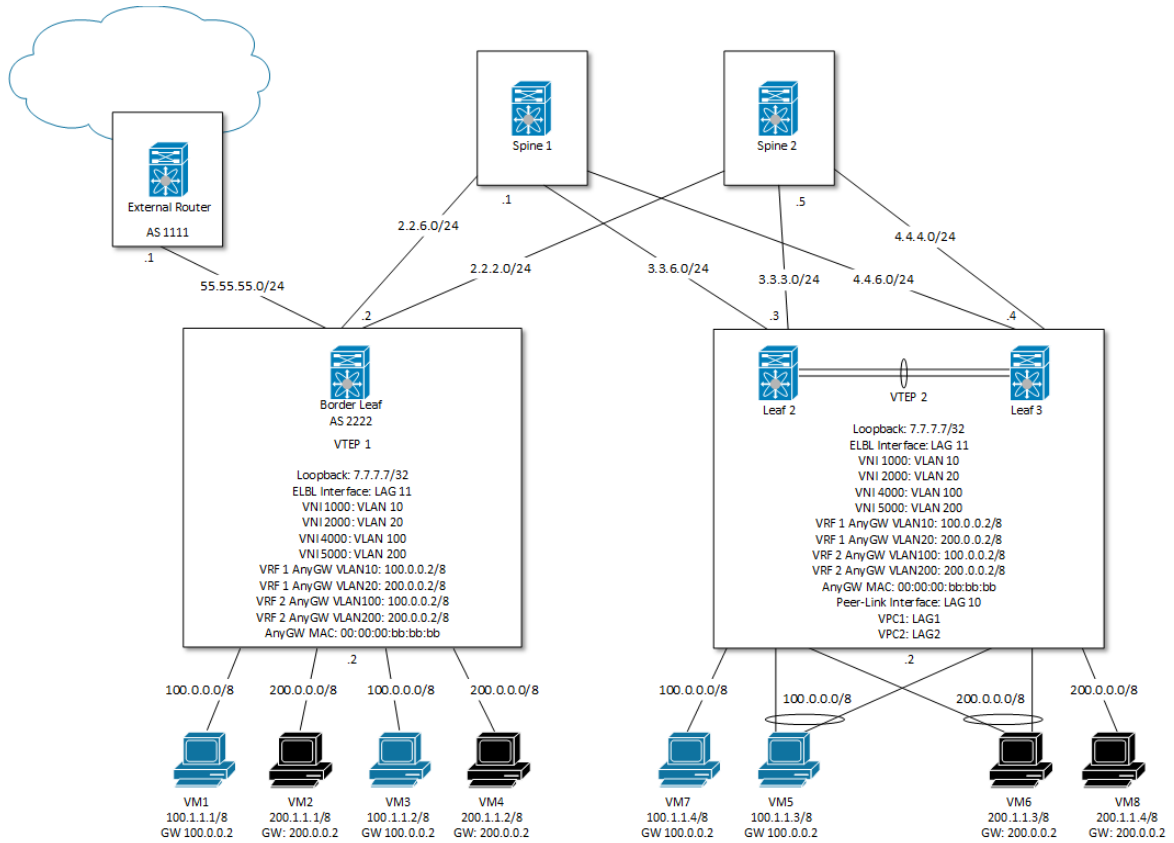


Table 3. Tenants List

VRF	VM	VNID	VLAN	IP	GateWay
VRF1	VM1	1000	10	100.1.1.1/8	100.0.0.2
VRF1	VM5	1000	10	100.1.1.3/8	100.0.0.2
VRF1	VM2	2000	20	200.1.1.1/8	200.0.0.2
VRF1	VM6	2000	20	200.1.1.3/8	200.0.0.2
VRF1	External Router	3000	30	55.55.55.1/24	
VRF2	VM3	4000	100	100.1.1.2/8	100.0.0.2
VRF2	VM7	4000	100	100.1.1.4/8	100.0.0.2
VRF2	VM4	5000	200	200.1.1.2/8	200.0.0.2
VRF2	VM8	5000	200	200.1.1.4/8	200.0.0.2

### 3.3. Configuration

#### Leaf 1

```
vlan database
```

```
!--- Create VLAN for VNI association
!--- Create VLAN 30 to associate VNI 3000 for external routing
vlan 10,20,30,100,200
!--- Create VLAN routing as the gateway for RIOT host
vlan routing 10 1
vlan routing 20 2
vlan routing 30 3
vlan routing 200 4
vlan routing 100 5
exit
```

```
configure
ip routing
!--- Enable VxLAN mode
vxlan enable
!--- Configure source loopback interface for source VTEP address
vxlan source-interface loopback 0
!--- Associate VNI to VLAN
!--- Configure remote VTEP for VNI
vxlan 1000 vlan 10
vxlan 1000 vtep 8.8.8.8
vxlan 2000 vlan 20
vxlan 2000 vtep 8.8.8.8
!--- VNI 3000 is used for external routing
vxlan 3000 vlan 30
vxlan 3000 vtep 8.8.8.8
vxlan 4000 vlan 100
vxlan 4000 vtep 8.8.8.8
vxlan 5000 vlan 200
vxlan 5000 vtep 8.8.8.8
!--- Configure the MAC address of anycast-gateway across all leaf nodes
fabric forwarding mode anycast-gateway 00:00:00:BB:BB:BB
```

```
!--- Add port to the port-channel
interface 0/48
addport 3/11
exit
```

```
!--- Create VRF for multi-tenancy
ip vrf "aaa"
!--- Import the routes from VRF aaa into VxLAN fabric on Border Leaf
ip import vxlan fabric
exit
ip vrf "bbb"
exit
```

```
!--- Create loopback for VxLAN source interface and source VTEP address
interface loopback 0
ip address 7.7.7.7 255.255.255.255
ip ospf area 0
exit
```

```
!--- Create the underlay routing interface to reach remote VTEP
```

```
interface 0/1
routing
ip address 2.2.2.2 255.255.255.0
ip ospf area 0
exit
```

```
!--- Create the underlay routing interface to reach remote VTEP
interface 0/2
routing
ip address 2.2.6.2 255.255.255.0
ip ospf area 0
exit
```

```
!--- Associate the VLAN 10 to configure the access port for VNI 1000
interface 0/3
vlan pvid 10
vlan participation exclude 1
vlan participation include 10
exit
```

```
!--- Associate the VLAN 20 to configure the access port for VNI 2000
interface 0/4
vlan pvid 20
vlan participation exclude 1
vlan participation include 20
exit
```

```
!--- Associate the VLAN 100 to configure the access port for VNI 4000
interface 0/5
vlan pvid 100
vlan participation include 100
exit
```

```
!--- Associate the VLAN 200 to configure the access port for VNI 5000
interface 0/6
vlan pvid 200
vlan participation include 200
exit
```

```
!--- Associate the VLAN 30 to configure the access port for VNI 3000
!--- VNI 3000 is used for external routing
interface 0/11
vlan pvid 30
vlan participation include 30
exit
```

```
interface lag 11
!--- Enable the ethernet loopback LAG mode on the port-channel for RIOT
host routing
vxlan elbl mode
no spanning-tree port mode
vlan participation include 10,20,30,100,200
```

```
vlan tagging 10,20,30,100,200
exit
```

```
interface vlan 10
routing
!--- Enable the anycast-gateway on vlan routing interface
fabric forwarding mode anycast-gateway
!--- Configure VRF instance for VRF aaa
ip vrf forwarding "aaa"
!--- Configure IP address
ip address 100.0.0.2 255.0.0.0
exit
```

```
interface vlan 20
routing
!--- Enable the anycast-gateway on vlan routing interface
fabric forwarding mode anycast-gateway
!--- Configure VRF instance for VRF aaa
ip vrf forwarding "aaa"
!--- Configure IP address
ip address 200.0.0.2 255.0.0.0
exit
```

```
!--- Create the vlan30 routing on Border Leaf for external routing
interface vlan 30
routing
!--- Enable the anycast-gateway on vlan routing interface
fabric forwarding mode anycast-gateway
!--- Configure VRF instance for VRF aaa
ip vrf forwarding "aaa"
!--- Configure IP address
ip address 55.55.55.2 255.255.255.0
exit
```

```
interface vlan 200
routing
!--- Enable the anycast-gateway on vlan routing interface
fabric forwarding mode anycast-gateway
!--- Configure VRF instance for VRF bbb
ip vrf forwarding "bbb"
!--- Configure IP address
ip address 200.0.0.2 255.0.0.0
exit
```

```
interface vlan 100
routing
!--- Enable the anycast-gateway on vlan routing interface
fabric forwarding mode anycast-gateway
!--- Configure VRF instance for VRF bbb
ip vrf forwarding "bbb"
!--- Configure IP address
ip address 100.0.0.2 255.0.0.0
```

```
exit

router ospf
router-id 2.2.2.2
exit
!--- Configure BGP
router bgp 2222
bgp router-id 2.2.2.2
address-family ipv4 vrf "aaa"
!--- Configure the external router as a neighbor
neighbor 55.55.55.1 remote-as 1111
redistribute connected
exit
exit
!--- Enable the ARP dynamic renew mode for RIOT host
arp dynamicrenew
exit
```

## Leaf 2

```
vlan database
!--- Create VLAN for VNI association
!--- Creaet VLAN 30 to associate VNI 3000 for external routing
vlan 10,20,30,100,200
!--- Create VLAN routing as the gateway for RIOT host
vlan routing 10 1
vlan routing 20 2
vlan routing 30 3
vlan routing 200 4
vlan routing 100 5
exit

configure
ip routing
!--- Enable VxLAN mode
vxlan enable
!--- Configure source loopback interface for soure VTEP address
vxlan source-interface loopback 0
!--- Associate VNI to VLAN
!--- Configure remote VTEP for VNI
vxlan 1000 vlan 10
vxlan 1000 vtep 7.7.7.7
vxlan 2000 vlan 20
vxlan 2000 vtep 7.7.7.7
!--- VNI 3000 is used for external routing
vxlan 3000 vlan 30
vxlan 3000 vtep 7.7.7.7
vxlan 4000 vlan 100
vxlan 4000 vtep 7.7.7.7
vxlan 5000 vlan 200
vxlan 5000 vtep 7.7.7.7
!--- Configure the MAC address of anycast-gateway across all leaf nodes
```

```
fabric forwarding mode anycast-gateway 00:00:00:BB:BB:BB
```

```
!--- Add port to the port-channel
interface 0/3
addport 3/1
exit
interface 0/4
addport 3/2
exit
interface 0/49
addport 3/10
exit
interface 0/48
addport 3/11
exit
```

```
!--- Create VRF for multi-tenancy
ip vrf "aaa"
exit
ip vrf "bbb"
exit
```

```
!--- Create loopback for VxLAN source interface and source VTEP address
interface loopback 0
ip address 8.8.8.3 255.255.255.255
ip address 8.8.8.8 255.255.255.255 secondary
ip ospf area 0
exit
```

```
!--- Create the underlay routing interface to reach remote VTEP
interface 0/1
routing
ip address 3.3.3.3 255.255.255.0
ip ospf area 0
exit
```

```
!--- Create the underlay routing interface to reach remote VTEP
interface 0/2
routing
ip address 3.3.6.3 255.255.255.0
ip ospf area 0
exit
```

```
!--- Associate the VLAN 100 to configure the access port for VNI 4000
interface 0/5
vlan pvid 100
vlan participation include 100
exit
```

```
interface lag 1
no port-channel static
switchport mode access
!--- Associate the VLAN 10 to configure the access port for VNI 1000
```

```
switchport access vlan 10
!--- Configure the port-channel to VPC ID 1
vpc 1
exit
```

```
interface lag 2
no port-channel static
switchport mode access
!--- Associate the VLAN 20 to configure the access port for VNI 2000
switchport access vlan 20
!--- Configure the port-channel to VPC ID 2
vpc 2
exit
```

```
interface lag 10
no port-channel static
switchport mode trunk
!--- Allow the VLAN on peer-link for the access port
switchport trunk allowed vlan 10,20,30,100,200
vlan acceptframe vlanonly
!--- Configure the port-channel as the VPC peer-link
vpc peer-link
exit
```

```
interface lag 11
!--- Enable the ethernet loopback LAG mode on the port-channel for RIOT
routing
vxlan elbl mode
no spanning-tree port mode
vlan participation include 10,20,30,100,200
vlan tagging 10,20,30,100,200
exit
```

```
interface vlan 10
routing
!--- Enable the anycast-gateway on vlan routing interface
fabric forwarding mode anycast-gateway
!--- Configure VRF instance for VRF aaa
ip vrf forwarding "aaa"
ip address 100.0.0.2 255.0.0.0
exit
```

```
interface vlan 20
routing
!--- Enable the anycast-gateway on vlan routing interface
fabric forwarding mode anycast-gateway
!--- Configure VRF instance for VRF aaa
ip vrf forwarding "aaa"
ip address 200.0.0.2 255.0.0.0
exit
```

```
!--- Create the vlan30 routing on Border Leaf for external routing
interface vlan 30
```

```
routing
!--- Enable the anycast-gateway on vlan routing interface
fabric forwarding mode anycast-gateway
!--- Configure VRF instance for VRF aaa
ip vrf forwarding "aaa"
ip address 55.55.55.2 255.255.255.0
exit
```

```
interface vlan 200
routing
!--- Enable the anycast-gateway on vlan routing interface
fabric forwarding mode anycast-gateway
!--- Configure VRF instance for VRF bbb
ip vrf forwarding "bbb"
ip address 200.0.0.2 255.0.0.0
exit
```

```
interface vlan 100
routing
!--- Enable the anycast-gateway on vlan routing interface
fabric forwarding mode anycast-gateway
!--- Configure VRF instance for VRF bbb
ip vrf forwarding "bbb"
ip address 100.0.0.2 255.0.0.0
exit
```

```
router ospf
router-id 3.3.3.3
exit
!--- Enable the ARP dynamic renew mode for RIOT host
arp dynamicrenew
!--- Enable VPC
feature vpc
vpc domain 1
role priority 1
peer-keepalive enable
peer-keepalive destination 10.58.151.104 source 10.58.151.56
system-mac 00:00:00:33:33:33
peer detection interval 600 timeout 2000
peer detection enable
exit
exit
```

### Leaf 3

```
vlan database
!--- Create VLAN for VNI association
!--- Creaet VLAN 30 to associate VNI 3000 for external routing
vlan 10,20,30,100,200
!--- Create VLAN routing as the gateway for RIOT host
vlan routing 10 1
vlan routing 20 2
```



```
vlan routing 30 3
vlan routing 200 4
vlan routing 100 5
exit
```

```
configure
ip routing
!--- Enable VxLAN mode
vxlan enable
!--- Configure source loopback interface for source VTEP address
vxlan source-interface loopback 0
!--- Associate VNI to VLAN
!--- Configure remote VTEP for VNI
vxlan 1000 vlan 10
vxlan 1000 vtep 7.7.7.7
vxlan 2000 vlan 20
vxlan 2000 vtep 7.7.7.7
!--- VNI 3000 is used for external routing
vxlan 3000 vlan 30
vxlan 3000 vtep 7.7.7.7
vxlan 4000 vlan 100
vxlan 4000 vtep 7.7.7.7
vxlan 5000 vlan 200
vxlan 5000 vtep 7.7.7.7
!--- Configure the MAC address of anycast-gateway across all leaf nodes
fabric forwarding mode anycast-gateway 00:00:00:BB:BB:BB
```

```
!--- Add port to the port-channel
interface 0/3
addport 3/1
exit
interface 0/4
addport 3/2
exit
interface 0/49
addport 3/10
exit
interface 0/48
addport 3/11
exit
```

```
!--- Create VRF for multi-tenancy
ip vrf "aaa"
exit
ip vrf "bbb"
exit
```

```
!--- Create loopback for VxLAN source interface and source VTEP address
interface loopback 0
ip address 8.8.8.4 255.255.255.255
ip address 8.8.8.8 255.255.255.255 secondary
ip ospf area 0
```

```
exit
```

```
!--- Create the underlay routing interface to reach remote VTEP
interface 0/1
routing
ip address 4.4.4.4 255.255.255.0
ip ospf area 0
exit
```

```
!--- Create the underlay routing interface to reach remote VTEP
interface 0/2
routing
ip address 4.4.6.4 255.255.255.0
ip ospf area 0
exit
```

```
!--- Associate the VLAN 200 to configure the access port for VNI 5000
interface 0/5
vlan pvid 200
vlan participation include 200
exit
```

```
interface lag 1
no port-channel static
switchport mode access
!--- Associate the VLAN 10 to configure the access port for VNI 1000
switchport access vlan 10
!--- Configure the port-channel to VPC ID 1
vpc 1
exit
```

```
interface lag 2
no port-channel static
switchport mode access
!--- Associate the VLAN 20 to configure the access port for VNI 2000
switchport access vlan 20
!--- Configure the port-channel to VPC ID 2
vpc 2
exit
```

```
interface lag 10
no port-channel static
switchport mode trunk
!--- Allow the VLAN on peer-link for the access port
switchport trunk allowed vlan 10,20,30,100,200
vlan acceptframe vlanonly
!--- Configure the port-channel as the VPC peer-link
vpc peer-link
exit
```

```
interface lag 11
!--- Enable the ethernet loopback LAG mode on the port-channel for RIOT
routing
```

```
vxlan elbl mode
no spanning-tree port mode
vlan participation include 10,20,30,100,200
vlan tagging 10,20,30,100,200
exit
```

```
interface vlan 10
routing
!--- Enable the anycast-gateway on vlan routing interface
fabric forwarding mode anycast-gateway
!--- Configure VRF instance for VRF aaa
ip vrf forwarding "aaa"
ip address 100.0.0.2 255.0.0.0
exit
```

```
interface vlan 20
routing
!--- Enable the anycast-gateway on vlan routing interface
fabric forwarding mode anycast-gateway
!--- Configure VRF instance for VRF aaa
ip vrf forwarding "aaa"
ip address 200.0.0.2 255.0.0.0
exit
```

```
!--- Create the vlan30 routing on Border Leaf for external routing
interface vlan 30
routing
!--- Enable the anycast-gateway on vlan routing interface
fabric forwarding mode anycast-gateway
!--- Configure VRF instance for VRF aaa
ip vrf forwarding "aaa"
ip address 55.55.55.2 255.255.255.0
exit
```

```
interface vlan 200
routing
!--- Enable the anycast-gateway on vlan routing interface
fabric forwarding mode anycast-gateway
!--- Configure VRF instance for VRF bbb
ip vrf forwarding "bbb"
ip address 200.0.0.2 255.0.0.0
exit
```

```
interface vlan 100
routing
!--- Enable the anycast-gateway on vlan routing interface
fabric forwarding mode anycast-gateway
!--- Configure VRF instance for VRF bbb
ip vrf forwarding "bbb"
ip address 100.0.0.2 255.0.0.0
exit
```

```
router ospf
```

```
router-id 4.4.4.4
exit
!--- Enable the ARP dynamic renew mode for RIOT host
arp dynamicrenew
!--- Enable VPC
feature vpc
vpc domain 1
role priority 2
peer-keepalive enable
peer-keepalive destination 10.58.151.56 source 10.58.151.104
system-mac 00:00:00:33:33:33
peer detection interval 600 timeout 2000
peer detection enable
exit
exit
```

## Spine 1

```
!--- Configure the underlay network
configure
ip routing
```

```
interface 0/2
routing
ip address 2.2.6.5 255.255.255.0
ip ospf area 0
exit
```

```
interface 0/3
routing
ip address 3.3.6.5 255.255.255.0
ip ospf area 0
exit
```

```
interface 0/4
routing
ip address 4.4.6.5 255.255.255.0
ip ospf area 0
exit
```

```
router ospf
router-id 1.1.1.1
exit
exit
```

## Spine 2

```
!--- Configure the underlay network
configure
ip routing
```

```
interface 0/2
```

```
routing
ip address 2.2.2.5 255.255.255.0
ip ospf area 0
exit
```

```
interface 0/3
routing
ip address 3.3.3.5 255.255.255.0
ip ospf area 0
exit
```

```
interface 0/4
routing
ip address 4.4.4.5 255.255.255.0
ip ospf area 0
exit
```

```
router ospf
router-id 5.5.5.5
exit
exit
```